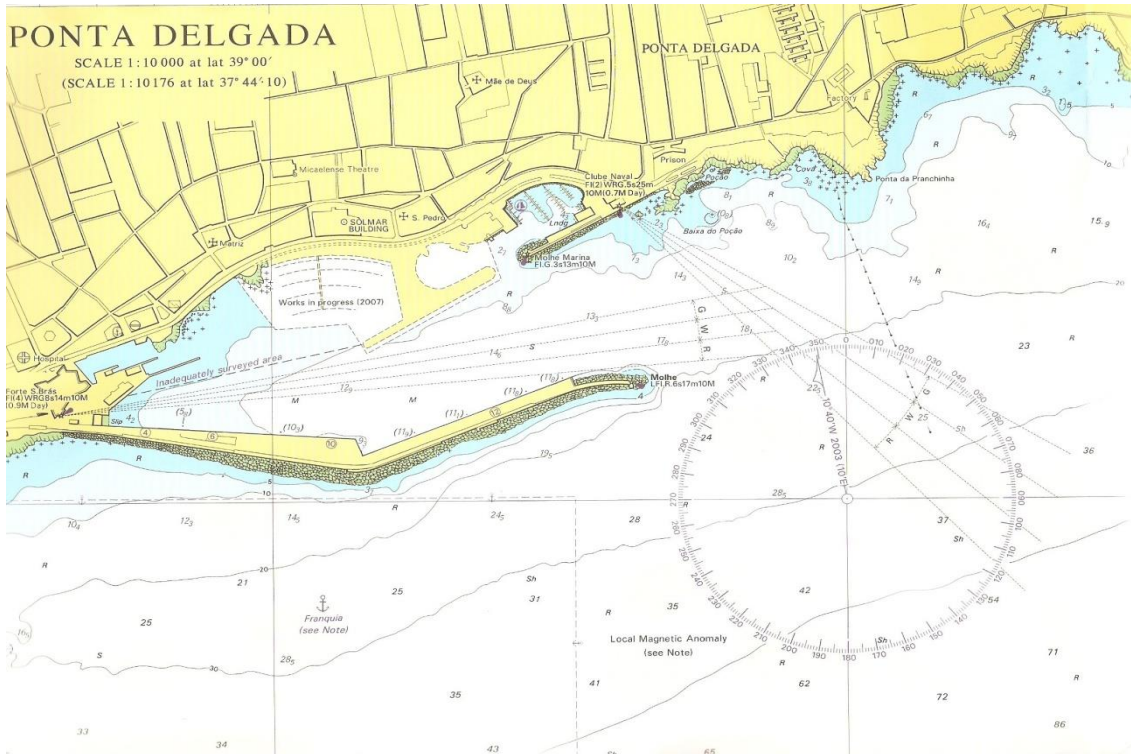




## Port of Ponta Delgada (St. Michael's Island)



### PORT DETAILS:

**1- PORT:**

**PONTA DELGADA - AZORES ISLANDS**

**2- AGENT'S DETAILS**

**ALBANO DE OLIVEIRA SUCESSOR LDA.**

**Address: Avenida Infante D. Henrique, 5 - 1<sup>o</sup>**

**P.O.Box 153**

**9500-762 Ponta Delgada**

**AZORES-ISLANDS**

**Phone: +351 296 282 638 – 24 HRS**

**Fax: +351 296 283 746**

**E-mail: [Office@AlbanoAgency.com](mailto:Office@AlbanoAgency.com) or [albano.agency@aosl.pt](mailto:albano.agency@aosl.pt)**

**Web-site: <http://www.albano-agency-azores.com>**

**P.I.C.: Mr. Jose M. Fortuna Raposo–Mob: +351 917 287 275**

**Mr. Antonio Raposo..... Mob: +351 917 765 828**

**Mr. Ricardo Paulino ..... Mob: +351 917 205 230**

**Mr. Rui Fragata ..... Mob: +351 963 454 834**

### **LOCAL TIME:**

**Winter Time: GMT -1 hour**

**Between the first GMT hour of last Sunday of October and first GMT hour of the last Sunday of the following March.**

**Summer time: GMT**

**Between the first GMT hour of the last Sunday of March and the first GMT hour of last Sunday of the following October.**



**ALBANO DE OLIVEIRA SUCESSOR LDA**

**SHIP AGENCY FULL SERVICES & BUNKERING IN ALL AZOREAN PORTS**

**(SINCE 1951)**



#### 4- NORMAL WORKING HOURS (MON./FRI.):

Office: From 09:00 to 12:30 & From 14:00 to 18:00  
 Port services: From 08:00 to 17:00  
**NOTE:** All the Port services to be performed outside the above reported periods must be required up to 15:00 hrs of the previous working time/day.

#### 5- PORT SERVICES

##### Communications

Agency: VHF CHANNEL 12  
 Pilot Station: VHF CHANNEL 14  
 Maritime Police & Harbour: VHF CHANNEL 11  
 Master:  
 Calling & Emergency: VHF CHANNEL 16

##### Pilotage

Location of boarding station: At outer roads abt. 0,5 miles SE from breakwater.  
 Minimum depth in approaches: Abt. 40 metres  
 Approx. time spent of berthing: Maximum 1 hour  
 Pilot Book #: 67

#### 6- PORT INFORMATION

Security ISPS  
 Ponta Delgada IMO Nr.: PTPDL184760001  
 Port Code: PTPDL  
 ISPS Cert. Nr.: 367/06  
 Position: Latitude 37° 44' N & Longitude 025° 40' W.  
 Location: Is located at the South part of Sao Miguel Island.

<u>Commercial Harbour</u>	NATO pier	Pier -12	Pier -10	Pier -6	Pier -4
Length:	220 m	355 m	220 m	215 m	150 m
Maximum draft:	10.50 m	10.50 m	9 m	5.80 m	4 m
Maximum air draft:	N/A	N/A	N/A	N/A	N/A
Height of Quay above water	1.85 m	1.85 m	1.85 m	1.85 m	1.85 m
- high tide - Height of Quay above water	3.05 m	3.05 m	3.05 m	3.05 m	3.05 m
- low tide					
Fresh Water	Yes	Yes	Yes	Yes	Yes
Gasoil	Yes	Yes	Yes	Yes	Yes
Fuel Oil	No	Yes	Yes	Yes	Yes
Electricity	Yes	Yes	Yes	Yes	Yes





**ALBANO DE OLIVEIRA SUCESSOR LDA.**  
Ship Agency full Services, Assistance & Bunkering in all Azorean Ports



**LLOYD'S**  
Agency

<b>Cruise Ship Terminal "PORTAS DO MAR"</b>	<b>South Pier</b>	<b>North Pier (Equipped with RO-RO ramp)</b>
Length:	360 m	90 m
Maximum draft:	11 m	9.50 m
Maximum air draft:	N/A	N/A
Height of Quay above water	1.80 m	1.80 m
- high tide - Height of Quay above water	2.80 m	2.80 m
- low tide		
Fresh Water	Yes	Yes
Gasoil	Yes	Yes
Fuel Oil	No	No
Electricity	Yes	Yes
Type of Fenders	Cell Rubber Fenders	Cell Rubber Fenders

**BUNKERS AVAILABLE:** Fuel oil (F.O.) 380CST (Low Sulphur) ex-quays pipeline. Gasoil (LSMGO & LSAGO) promptly arranged by us, on request, either ex-quays pipeline or by truck. Lubricants and others: Same as above.

- Vessels with more than 10.50 metres of draft can be supplied with MGO or fresh water on the roads by using local harbour tug transport.
- There are no barges available at this Port and harbour tugs cannot supply F.O. on the roads.
- Supplies on the roads are always subject to the Port Authorities permission, weather conditions and bunker transport availabilities at the time of the call.
- Vessels calling for crew change and/or to land crew members, to receive spares, and other minor services, it is possible to assist/clear the vessels on the roads to minimize the compulsory call expenses. All the services to be rendered on the roads are always subject to the weather conditions at the time of the arrival.

**FRESH WATER:** Available from shore connection at all quays inner harbour. Rate 50/60 m/tons per hour. Number of hoses: 2 per ship. Connection dim. from 50mm (quick change).

**REPAIRS AVAILABLE:** Fitting shops, Boilers, Metallization, Castings, Electric and oxyacetylene welding, Carpenters, Pumps, Underwater cleaning, cutting and welding, Electronic, Electricity services, etc.

**Note:** When a vessel intends to call this Port for repairs, we suggest a previous advice to us about the extension of damage and works required.

No dry docking available.

**TUGS AVAILABLE ON REQUEST**  
(For vessels manoeuvres inner Port)

"PERO DE TEIVE" (2.600 H.P.) - (25 tns bollard pull)  
"SÃO MIGUEL" (3.400 H.P.) - (30 tns bollard pull)  
"PORTAS DO MAR" (1.100 H.P.) - (MOTOR LAUNCH)

Extra services requiring Tugs assistance available on request.



**ALBANO DE OLIVEIRA SUCESSOR LDA**  
SHIP AGENCY FULL SERVICES & BUNKERING IN ALL AZOREAN PORTS  
(SINCE 1951)



<b><u>SHIPSCHANDLERS:</u></b>	Provisions and stores promptly arranged by us on request.
<b><u>LAUNDRYMAN:</u></b>	Effecting special delivery services.
<b><u>MEDICAL ASSISTANCE:</u></b>	Good hospital and a first class Clinic with good Doctors available at this end.
	Helicopter service available for evacuation of sick/wounded persons from the vessel at sea.
Water density in Port:	1.025 g/l
Side of ship to berth:	STBD (After turning inner Port) or by PORTSIDE on request. Maximum basin space to turn the vessel 800 meters.
Bollards and fenders:	Available along all quays (Dist. Bollards every 15 m)
Gangways:	Available, length 6 & 8 m, respectively.
Garbage:	Disposal facilities available
Sewage (Black Water) / Sludge:	Collection facilities available through auto-tank.
Oil Spill:	Port equipment response available
Stevedores, Machinery, Cranes and Similar:	Available on 48 hrs. notice
Cargo Gear: Mobile Cranes:	2 Gottwald moveable cranes with SWL of 100 tons each.
For Load/Unloading Bulk cargoes:	2 Grab/100 tons - Daily capacity abt. 1.800 m/t

#### **7- ARRIVAL / DEPARTURES:**

A previous advice as soon as possible by e-mail or fax before the vessel's arrival is recommended advising ETA and the reason for the call enabling this agency to prepare everything in advance in order to avoid delays.

Documents required: Please contact this agency.

Shore passes: To be provided by our agency.

Shore passes (Cruise Vessels): To be used the Ship's ID Card for Crew + Pax.

#### **8- AIR ACCESS:**

Airlines with regular flights to & from the area: [AZORES AIRLINES & TAP](#) - with every day flight connections to/from Lisbon Airport (LIS). Local Ponta Delgada Airport (PDL) is located abt. 2 Km from the Port. [RYANAIR](#) also flying regularly to Ponta Delgada.

#### **9- CALL'S EXPENSES:**

All Port and official charges are subject to the vessel's Type, GRT and time spend in Port.

According to official tariffs in force, we are able to supply by e-mail a breakdown for the expenses to be incurred with any call, when requested.

#### **10- AGENCY FEES:**

To be agreed, case-by-case, between our Agency & our Principals.





**ALBANO DE OLIVEIRA SUCESSOR LDA.**  
Ship Agency full Services, Assistance & Bunkering in all Azorean Ports



**LLOYD'S**  
Agency

## 11- OTHER INFORMATION:

- Weather:** Normally good weather with small thermic alterations. The climate is temperate. The air temperatures averages being 14.5° C on winter and 22.3° C on summer.
- Environmental Protection issues:** Complying with MARPOL 73/78 regulations.
- Post Office:** Located at abt. 800 meters from the Port.
- Bank/Currency facilities:** Nearest banks 300 meters from the Port. Local currency EURO. Other currencies readily accepted U.S. Dollars, GBP. Major credit cards normally accepted locally Master Card, VISA and American Express.
- Shopping:** Ponta Delgada main shopping area located abt. 1 Km from the Port
- Emergency phone numbers:** Maritime Police - 296 287 393  
Harbour Master – 296 205 240  
Hospital – 296 203 000  
Fire Brigade – 296 301 301  
Customs Guard/GNR – 296 283 875  
Immigration – 296 286 623  
Civil Police – 296 282 022  
Ambulance – 112 (or 296 301 301)  
Taxi – 296 382 000
- Consulates available:** Please contact this agency.
- Local Holidays:** 2019:  
Jan: 1<sup>st</sup>; Feb: 13<sup>th</sup>; Mar: 30<sup>th</sup> Apr: 25<sup>th</sup>; May: 1<sup>st</sup>, 7<sup>th</sup>, 21<sup>st</sup> & 31<sup>st</sup>; Jun: 10<sup>th</sup>; Aug: 15<sup>th</sup>; Oct: 5<sup>th</sup>; Nov: 1<sup>st</sup>; Dec: 1<sup>st</sup>, 8<sup>th</sup> & 25<sup>th</sup>.

Please contact this agency if further information required, including Port tariffs.

**FULL AGENCY SERVICES AND ASSISTANCE IN ALL AZOREAN ISLANDS.**

**(ALL CONTACTS TO BE MADE THROUGH THIS HEAD OFFICE AT PONTA DELGADA)**

## **ALBANO DE OLIVEIRA SUCESSOR LDA.**

SHIPS' AGENCY – Full Services & Bunkering

Avenida Infante D. Henrique, 5-1º

P. O. Box 153

9500 – 762 Ponta Delgada

### **AZORES ISLANDS**

Tel : +351 296 282 638 (24 Hours service)

Fax : +351 296 283 746

Mobile : +351 917 765 828

E-Mail : [Office@AlbanoAgency.com](mailto:Office@AlbanoAgency.com)

Web-site: [www.albano-agency-azores.com](http://www.albano-agency-azores.com)



**ALBANO DE OLIVEIRA SUCESSOR LDA**  
SHIP AGENCY FULL SERVICES & BUNKERING IN ALL AZOREAN PORTS  
(SINCE 1951)